



LMS

Learning Management System



About LMS

A Learning Management System is not complicated in today's competitive technology world; it is a gift to your organization. Learning Management Systems (LMS) play a significant role in the development and design of eLearning.

If you're new to eLearning or thinking about making the switch, you've probably heard a lot about Learning Management Systems lately. This is mainly because it is one of the most basic eLearning tools, acting as the cornerstone for all online courses and training modules.



Evolution of LMS

1990S - 2000S LMS



Learning Experience

Collaboration

"Discussion Group"

Portals



Learning Administration

Course Administration

Enrollment and Scheduling

Resource Management

Extended Enterprise

e-Learning

e-Commerce

Virtual Classroom

Assessment Tool

Security and Roles

Reporting



Modern Learning System



User Experience

Mobile, Flexible UI



Social & Collaboration

Dynamic Profile

Expert Directory

Recommendation Engine

Communities

Tagging

Video Management

Feedback Management

Content Sharing

Content Management



Administration & Talent

Old LMS Feature Set +

Deeper Analytics

Talent Management



Why e-Learning?



Self-directed, learners can proceed at their own pace.



Consistency in the format and delivery of content.



Convenient and flexible available on demand (24x7x365) even in remote locations.



Easy to update and disseminate content.



Scalable - simultaneous, audience and / or enterprise - wide rollouts possible.



Reduced time away from work and cost of logistics.



Easy-to-manage administration and analytics.



High individual learning accountability.



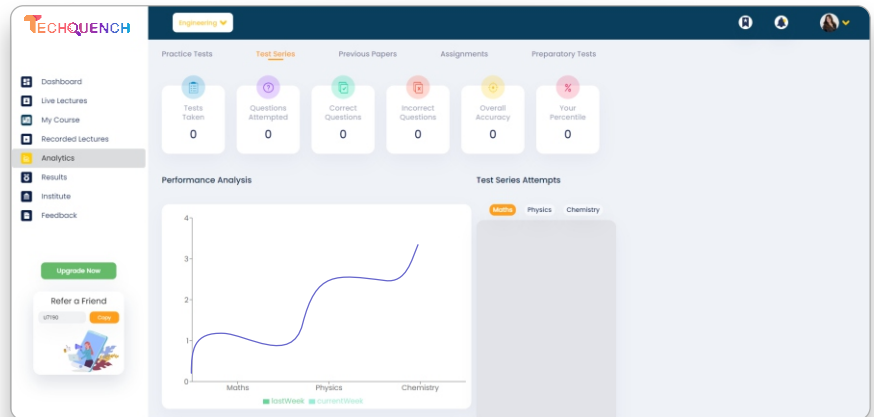
Ideal for a multi-cultural and multi-lingual context.



Features of LMS

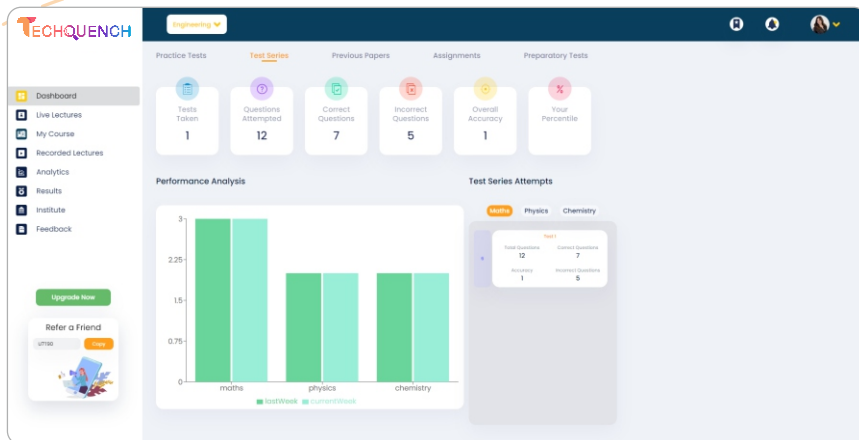
Course Landing Page

For a Single Goal, Minimal Distraction, and Targeted Audience, a fully customised Landing Page will be designed.



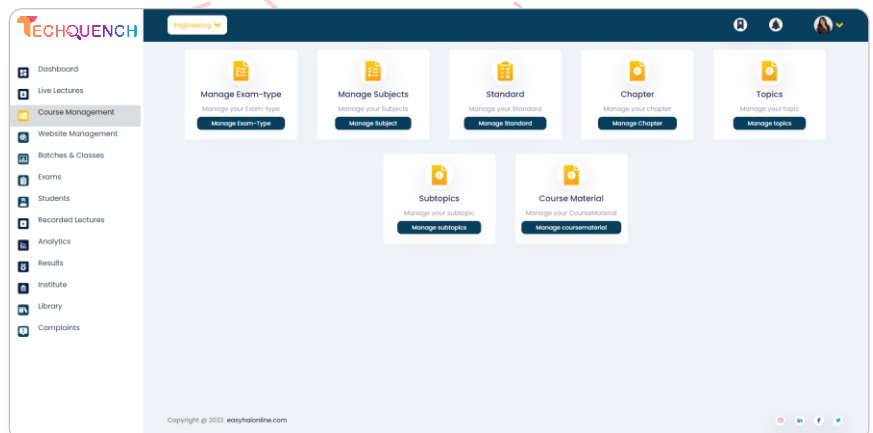
Fully White Labelling Solution

A customised LMS that comprises a significant number of course libraries and is supplied to our customers with the most cost-effective white labelling solutions.



Live courses are accessible in two formats: Youtube and Zoom integration

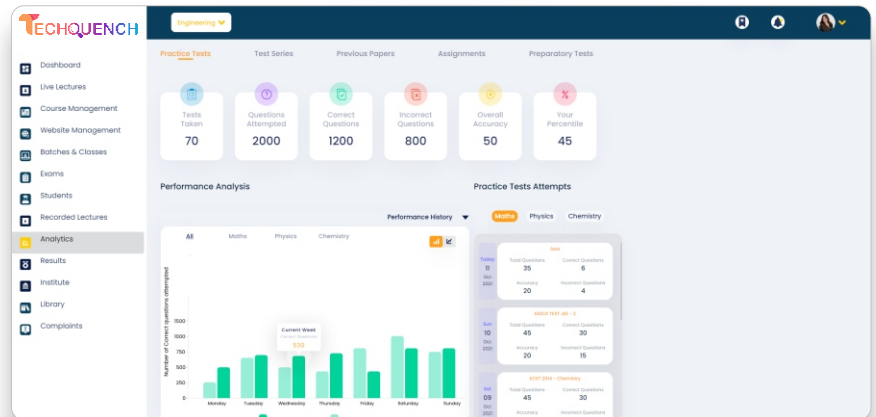
We offer Youtube and Zoom integration for convenient Live Class transmission to students.



Features of LMS

10+ Test Question Formats

We provide over ten different types of test creation tools, including multiple choice, true/false, essay, matching, drag and drop, gap fill, drop into image, and many more



Performance-based Analysis

You can keep track of all of your students', teachers', and other staff's progress

Subject-based Analysis

Students are evaluated on their performance in several subjects, practise, and other factors.

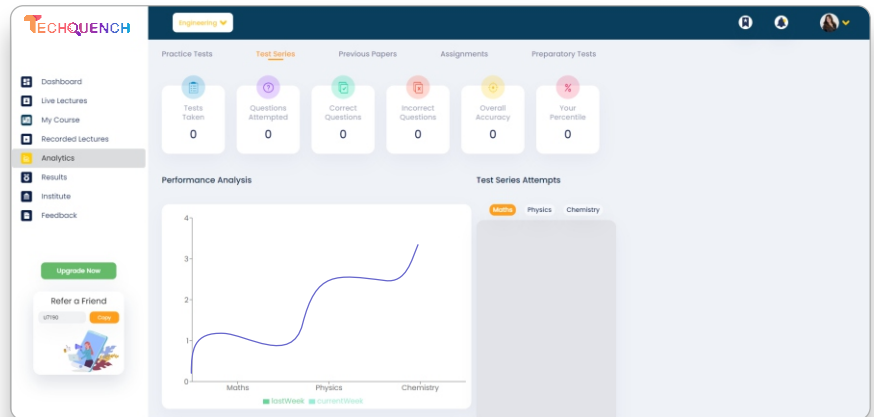
The screenshot displays the TECHQUNCH dashboard with a sidebar menu on the left. The main content area is titled 'Complaints' and includes a 'Complaints' section with statistics: All (36), Issued (23), Pending (5), Resolved (8), and Feedbacks (36). Below this is a table showing complaint data.

S.No	Complaints	Name	Date of issue	Phone Number	Media	Status	Action
19	complaint send...	6244146bcb50a0f0e287e64	April 2, 2022	1234567890		Resolved	
20	complaint send...	6244146bcb50a0f0e287e64	April 2, 2022	1234567890		Resolved	
21	complaints...	6244146bcb50a0f0e287e64	April 2, 2022	1234567890		Resolved	
22	complaints...	6244146bcb50a0f0e287e64	April 2, 2022	1234567890		Resolved	
23	complaints...	6244146bcb50a0f0e287e64	April 2, 2022	1234567890		Pending	
24	complaints...	6244146bcb50a0f0e287e64	April 2, 2022	1234567890		Resolved	
25	complaints...	6244146bcb50a0f0e287e64	April 2, 2022	1234567890		Issued	
26	complaints...	6244146bcb50a0f0e287e64	April 2, 2022	1234567890		Pending	

Features of LMS

AI adapts Performance Analysis

AI can assist instructors and parents in providing objective feedback that benefits students, teachers, and institutes based on facts and data from numerous sources

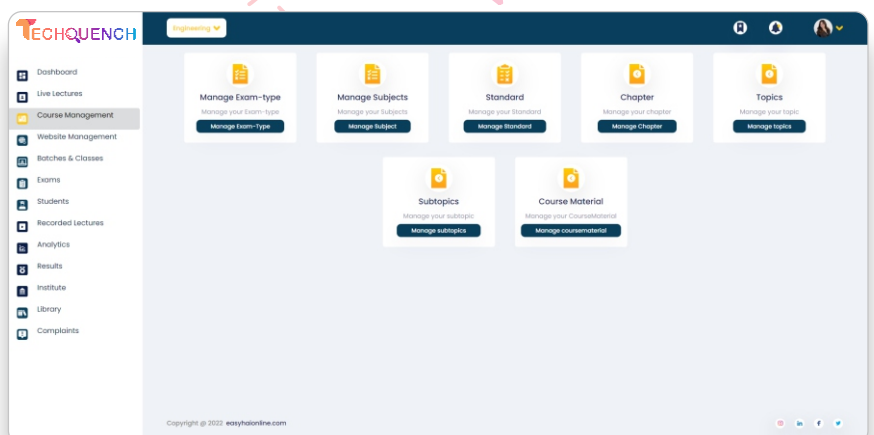


User Dashboard

For all of the personalised tasks, there is a very unique and practical User Dashboard

Reporting Logs

Users will be able to obtain multiple reports in a variety of formats



Future of e-Learning

- Augmented Reality (Augmented Learning)

- m-Learning

- Gamification

- Big Data

- Personalized Learning Experience (PLE)

- MOOCs (Massive Open Online Courses)

- Automation

- APIs

- A tendency towards cloud-based LMSs (87% - Web-based LMS | 13% - Installed LMS)

- Switching to another LMS - 66% of those organization that have decided to switch to another LMS, express as main reason for such a shift the fact that there were additional features required that their previous LMS could not support.

- NGDLE (Next Generation Digital Learning Environment) the successor of the LMS
The NGDLE would behave similarly to a smartphone in that it would aggregate the elements of content and functionality supported by a cloud-like space that would not be identical for any two learners, instructors, departments or institutions.





TECHQUENCH

+91-9289672784

A-3, 180, Police Colony, A/3 Block,
Paschim Vihar, Delhi, 110063

www.techquenchsolution.com

techquenchsolution.com

